



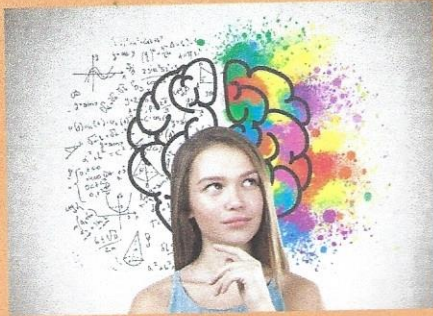
FACE

FAMILY ADVICE · COMMUNICATION · EDUCATION

Winter 2024/2025

Newsletter

FREE
until
JAN 25



Understanding the Teenage Brain
Watch this recorded session in your own time, to learn why our teens think, feel and behave very differently from adults and how we can support them.

Thursday
5th Dec
19:00 - 21:00
£24



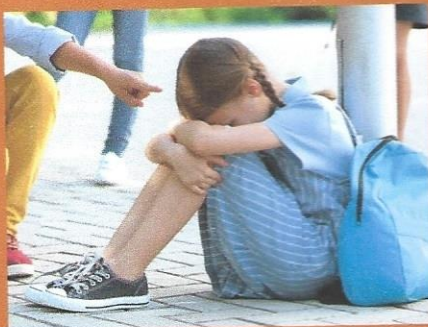
Supporting a Child with ADHD
Challenging the stereotypes and giving practical interventions. Clear explanation of the condition in all its forms and extremely useful advice.

Tuesday
17th Dec
19:00 - 21:00
£24



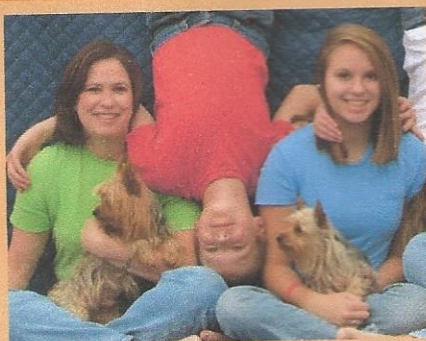
Facing Defiance
Effective interventions for handling defiant behaviour. ADHD, ODD and PDA relevant as well as regular challenging behaviour. Introduction to the FACE programme - Facing Defiance - 6 week course

Tuesday
7th Jan
19:00 - 21:00
£24



Anxiety-Based School Avoidance
Understanding and supporting children who are anxious about school. Steps you can take to help them back into the classroom.

Thursday
9 Jan
19:00 - 21:00
£24



AUTISM:
Improving Communication
Looking at how small changes in how we communicate with children on the spectrum can lead to big improvements.

facefamilyadvice.co.uk

info@facefamilyadvice.co.uk

WINTER TIMETABLE

Talks are delivered online via zoom 7pm to 9pm £24 each
If you can't make the date ask for the link to the recording, available for 48 hours afterwards

Book online at facefamilyadvice.co.uk

go to the PARENT page

FREE - Decreasing Depression
FREE - Anxiety Explained

25 NOV
20 JAN

What is ACT?

26 NOV, 21 JAN

Understanding Addictive Behaviour

28 NOV

Supporting a Child with ADHD

5 DEC, 2 JAN

Understanding Anger

16 DEC, 13 JAN

Facing Defiance

17 DEC, 14 JAN

Supporting Healthy Screen Use

19 DEC, 16 JAN

Anxiety-Based School Avoidance

7 JAN

AUTISM: Improving Communication

9 JAN

Raising Self-Esteem

27 JAN

Supporting Healthy Sleep

28 JAN

Improving Family Communication

4 FEB

Introduction to OCD

18 FEB